



Continuous inkjet 9750+: The true value of innovation



The innovation you need. The experience you trust.

Markem-Imaje delivers even more flexibility and stability with our next-generation model, the 9750+.

Backed by decades of building dependable inkjet printers, the 9750+'s **revolutionary** ink circuit—with its unique capacity to manage all types of inks, including contrast pigment inks for premium permanence and legibility—takes inventory streamlining and flexibility to the next level.

Meticulously engineered and qualified by the most modern methods, the 9750+'s latest enhancements also bring you:

- Technology leaps grounded in time-tested industrial processes for easier maintenance and one of the industry's **highest** uptime
- The market's **most** environmentally-friendly coding solution
- The market's **only** customizable 24-pin interface, so you can integrate the coder to best suit your needs
- Clear, customizable and traceable black or colored codes that meet customers' growing demand for supply chain visibility

Key benefits

Innovation

Advanced R&D backed by proven industrial processes and methods

- **Market's first hybrid printer** takes dye or pigmented inks so companies can just use one continuous inkjet coder, regardless of ink or packaging
- **Intelli'Swap®** technology streamlines mechanicals down to swappable modules
- **Jet Speed Control** technology automatically adjusts ink and printer variables to ensure perfect drop placement, quality and code consistency. Every time

Sustainability

More sustainable solutions =
Long-term value and lower TCO*

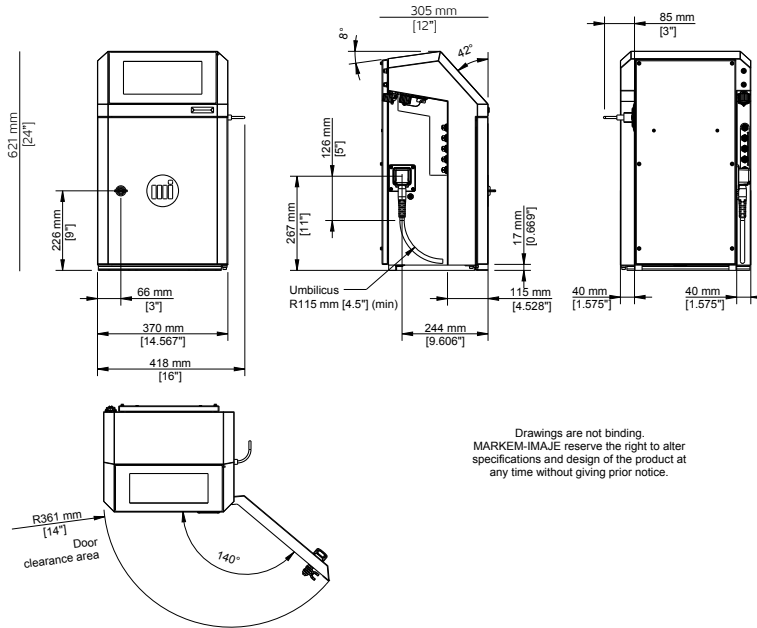
- **Intelli'Swap®** means you synchronize parts replacement and swap only individual items, not the entire block
- **Intelli'Design®** process and MEK-free inks help cut consumable consumption and VOC* emissions by up to 50-60%, depending on mode used, while improving operator safety and TCO
- **Consumable-saving mode** even reduces consumption and VOC emissions of MEK-based inks by up to 35%

Digitalization

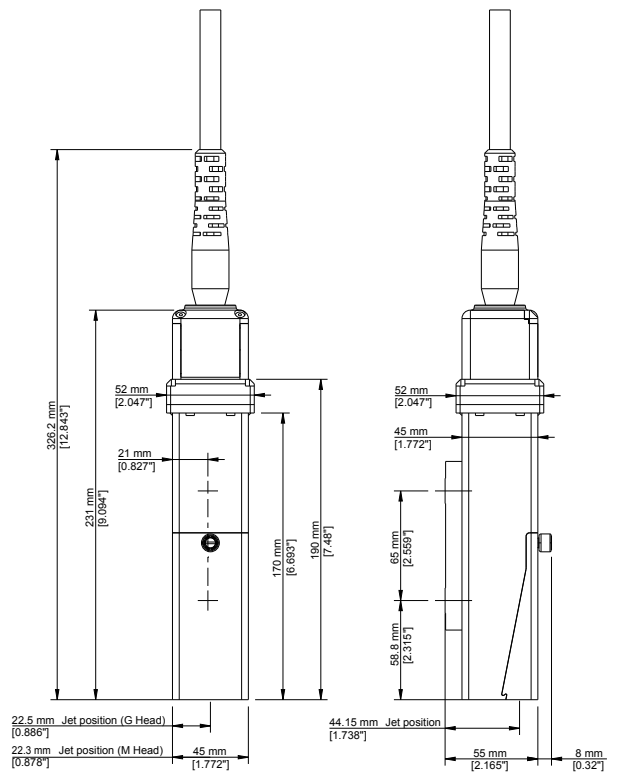
Market's most easily customizable
integration into Industry 4.0

- Currently market's only provider of 24-pin interface customizable to accept any of the 70+ signals available to run lines
- M12 input/output connector and compatible with various industrial protocols, enabling easier and more seamless integration
- MiVista™ connected printer services powered by a secure IoT* platform**, allow for predictive analysis and to help maximize uptime AND achieve OEE* objectives

9750+ continuous inkjet specifications



Drawings are not binding. MARKEM-IMAJE reserve the right to alter specifications and design of the product at any time without giving prior notice.



Print features

Mono-jet printhead
 G head (printing resolution: 71 dpi)
 M head (printing resolution: 115 dpi)
 Up to 5 lines of print
 Print speed: up to 6.6 m/s
 Font height from 5 to 32 dots
 Character height: from 1.2 to 11.2 mm
 Wide choice of 1D and 2D barcodes: EAN 8/EAN 13/UPCA /UPCE barcodes, code 39, interleaved 2 of 5, Datamatrix, QRcode, Dotcode, GS1 standard compliant
 Wide choice of characters: Latin, Arabic, Cyrillic, Hebrew, Japanese, Chinese, Korean, etc.

Other characteristics

Weight: 25 kg
 Table-top or vertical mounting
 Ultra-flexible 3-meter umbilical cable
 Stainless steel cabinet and printhead case
 Dust/water ingress protection rating: IP56 requiring no plant air
 Operating temperature range: 32 °F to 122 °F (0 °C to 50 °C) depending on printer configuration
 Humidity: 10 to 90% non-condensing
 Electrical power supply: 100-240 V; 1.6 A; frequency 50-60 Hz; 30 W

Operations

WYSIWYG 10-inch capacitive color touchscreen: real-time display of remaining print capacity (hrs/number of messages); integrated assistance and alert system; simplified message printing and management; user profile creation; consumption

and availability tracking
 Message library (up to 1,000 messages)
 Automatic selection of fonts, depending on print speed and printhead/object distance
 Specific date management (rounding date function)
 Parent/child connectivity
 Jet Speed Control to guarantee marking quality
 Printhead with embedded intelligence for high marking quality and reduced maintenance
 Broad range of dye and pigment inks: multi-use, high performance; alcohol-based, ketone-free and MEK-free inks
 Sealed 0.6 and 0.8-liter consumable cartridges with foolproof system
 Compact and modular ink circuit for better thermal management and controlled additive consumption
 Up to 18,000 hours between major services for dye prints and up to 9,000 hours for pigmented codes
 100% front access modular ink circuit for click-in, click-out maintenance or repair
 Quick connect/disconnect of accessories (photocell, alarm and encoder)
 Enhanced native connectivity including USB, Ethernet, serial and a configurable M12 connector for I/O

Remote services

Miva™, intelligent self-support solution: 24/7 self-troubleshooting and "how to" videos. Live helpdesk support with remote video capabilities
 MiVista™ connected printer services powered by a secure IoT platform**

Options

Ultra-flexible 6-meter umbilical cable
 Consumable-saving mode for up to -60% additive consumption and VOC emission reduction for MEK-free inks, or up to -35% for MEK-based inks. Less than 2 cc/h for MEK-free ink and less than 3.5 cc/h for MEK inks at 20 °C
 Air blade kit; printhead pressurization kit
 Many I/O possibilities including a configurable single point connector (24 pins), capable of accepting 70+ signals

Accessories

Wide range of accessories
 Printer supports: stands (stainless steel or aluminum), table or wall mounting brackets
 Printhead supports: stand (stainless steel) and choice of brackets
 Pigment ink shaker
 Photocells
 Encoders
 Alarm beacons (24 V)
 Set of pre-cabled connectors M12, Ethernet IP66

Software

Fully compatible with CoLOS® Version 6.4 Service Pack onwards
 Logo creation with CoLOS® Graphics software

*TCO: Total cost of ownership. VOC: Volatile organic compounds. OEE: Overall equipment effectiveness. IoT: Internet of things **Please check availability in your country



9, rue Gaspard Monge - B.P. 110
 26501 Bourg-lès-Valence Cedex France
 +33 (0) 4 75 75 55 00
markem-imaje.com